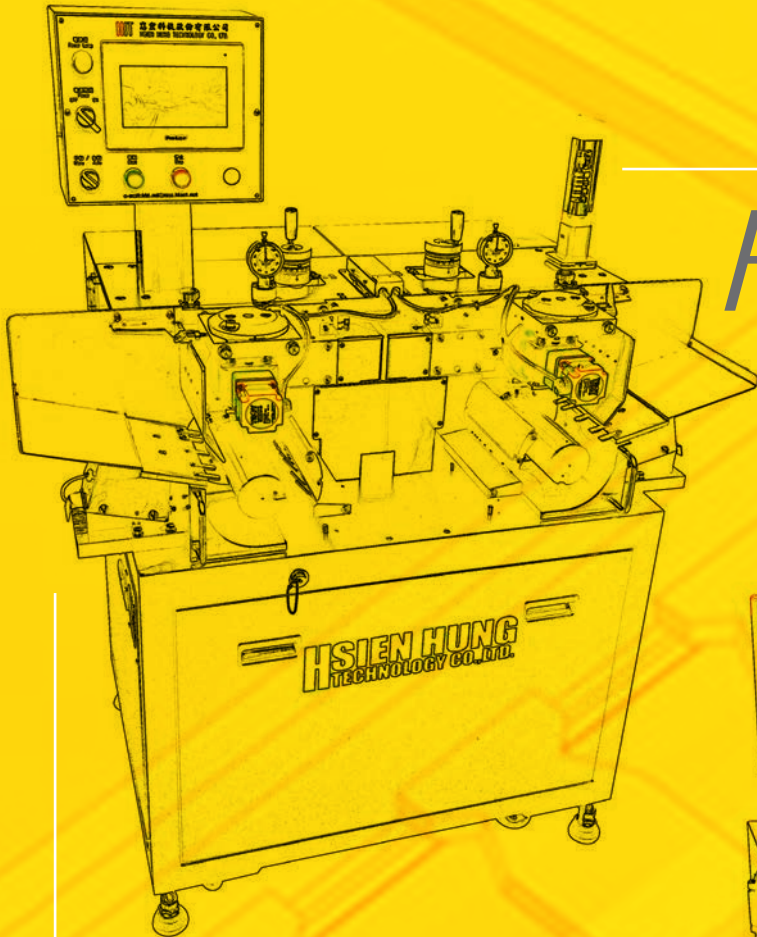




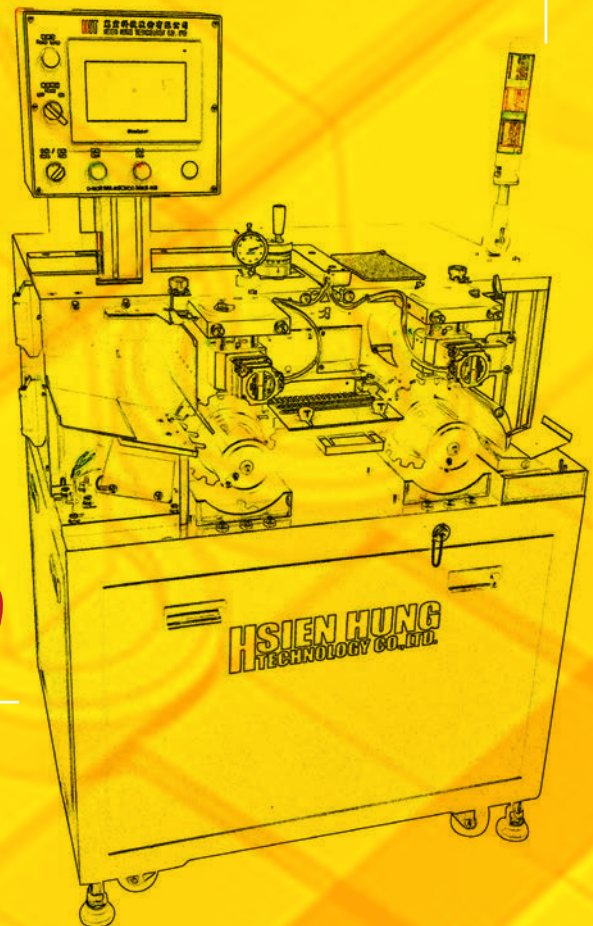
憲宏科技股份有限公司

HSIEN HUNG TECHNOLOGY CO.,LTD.

專用機 Specialized Machine / 自動化設備 Automation Equipment



HH-CG3.1

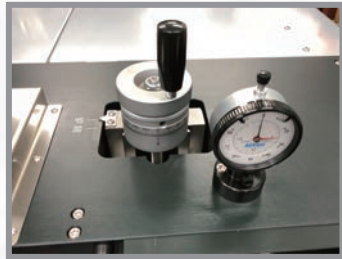


HH-CG4.0

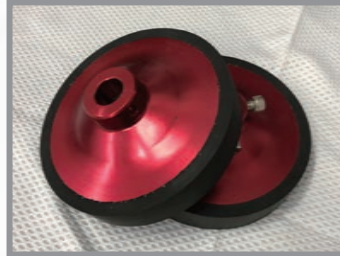
[www.hht-tw.com](http://www.hht-tw.com)



操控箱  
Operating Elements



進刀刻度手輪  
Feed Scale Handwheel



盤型橡膠輪  
Fitting The Rubber Wheel



載料滾筒  
Bearing Drum

## HH-CG3.1



入料槽 Unmachined Parts Hopper



完成品收料盒 Finished Parts Hopper



輸送帶 (選購品) Conveyor Device



電鑄砂輪 Electroplated Diamond Wheel



完成品 Finished Product

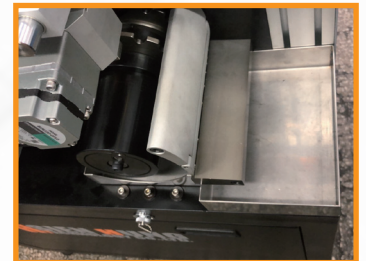
## 生產條件 Production condition

- A** 棒材需清洗淨：棒材表面水/油漬會影響倒角的品質，可浸泡去漬油或其他具自然揮發的溶劑數分鐘後，取出風槍吹乾。  
Rod need to be clean: In order to maintain chamfer quality, no water and oil stains adhere on rod surface is necessary. Possible clean the rod by soaking in degreasing agent or other natural volatile solvent for few minutes and drying by air pressure gun.
- B** 該機屬前定位式倒角，棒材端面需完整與垂直度。  
As machine is front locate mode chamfering, therefore, end face of rod must be smooth and perpendicularity.
- C** 該機屬乾式切削，務必配置集塵設備，揚塵容易造成機件磨損與棒材刮傷。  
Dust collecting equipment is compulsory for this type of dry cutting machine, otherwise, dust could damage the accessories of machine and cause the rod scrape.
- D** 載料滾筒屬精密配合公差，替換時務必清潔乾淨再裝上。  
Bearing Drum is based on precision fitting, it must be fully clean before replace it.
- E** 長時間不使用時，須將載料滾筒上的剩餘棒材移除，避免橡膠壓輪壓住棒材，產生變型。  
In order to prevent rubber wheel deformation, rods must be removed from bearing drum, when machine is shut down for long time.

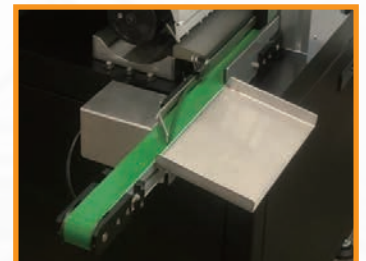
## HH-CG4.0



入料槽 Unmachined Parts Hopper



完成品收料盒 Finished Parts Hopper



輸送帶（選購品）Conveyor Device



電鑄&樹脂砂輪  
Electroplated &  
Resin Bond Diamond Wheel

完成品 Finished Product

# HH-CG3.1/HH-CG4.0

## 倒角研磨機 Chamfering Grinder

| 技術資料   |   |
|--------|---|
| 外型尺寸   | CG3.1 / W1200×D700×H1530 mm<br>CG4.0 / W950×D720×H1530 mm |
| 重量     | 300Kg   |
| 動力需求   | AC220V 單相   |
| 倒角公差   | < 0.1mm   |
| 倒角角度   | 30°/45°   |
| 載料滾筒週期 | 0.10 ~ 4.28rpm  |
| 研磨砂輪   | 1A1 · 125.20.20   |
| 砂輪馬達   | 400W/3000rpm  |
| 研磨軸心轉速 | 3000rpm   |
| 研磨範圍   | D Ø3.2~Ø20mm ; L 38~195mm                                 |

| Technical data           |   |
|--------------------------|---|
| Outside dimensions       | CG3.1 / W1200×D700×H1530 mm<br>CG4.0 / W950×D720×H1530 mm |
| Weight                   | 300Kg   |
| Power supply             | AC220V Single phase                                       |
| Chamfer truth or running | < 0.1mm   |
| Chamfer angle            | 30°/45°   |
| Bearing drum cycle time  | 0.10 ~ 4.28rpm  |
| Grinding wheel           | 1A1 · 125.20.20   |
| Grinding motor           | 400W/3000rpm  |
| Grinding spindle         | 3000rpm   |
| Grinding range           | D Ø3.2~Ø20mm ; L 38~195mm                                 |

## 產能 Productivity

|   | 棒材外徑(mm)<br>OD of rod (mm) | 倒角量(mm)<br>Chamfer(mm) | CG3.1產能(秒/支)<br>Productivity(sec/rod) | CG4.0產能(秒/支)<br>Productivity(sec/rod) |
|---|----------------------------|------------------------|---------------------------------------|---------------------------------------|
| 1 | φ3.2~φ3.40                 | C0.3~C0.4              | 1                                     | 1                                     |
| 2 | φ4.03~φ4.40                | C0.4~C0.6              | 1~1.2                                 | 1~1.2                                 |
| 3 | φ6.03~φ6.40                | C0.6~C0.8              | 2~3                                   | 2~2.5                                 |
| 4 | φ8.03~φ8.40                | C0.6~C0.8              | 4~5                                   | 3~4                                   |
| 5 | φ10.03~φ10.50              | C0.8~C1.2              | 6~7                                   | 4~5                                   |
| 6 | φ12.03~φ12.50              | C0.8~C1.2              | 8~9                                   | 7~8                                   |
| 7 | φ16.03~φ16.50              | C0.8~C1.2              | 10~11                                 | 9~10                                  |

PS. 砂輪品質銳利度、番數會直接影響產能與砂輪壽命

Grinding wheel quality (sharpness and mesh size) would direct influence productivity and life time of grinding wheel.

所配置的砂輪(#200)為原廠提供

Mesh #200 grinding wheel is provided by machine manufacturer.

表中的數據為單邊載料滾筒的產能

In the table is result of functionality with one side bearing drum.

23677新北市土城區亞洲路108巷14號

No.14, Ln. 108, Yazhou Rd., Tucheng Dist., New Taipei City 23677, Taiwan (R.O.C.)

Tel : 02 2269-4388

Fax : 02 2269-4412

E-mail : hht.md@msa.hinet.net 統一編號 : 2840 9464